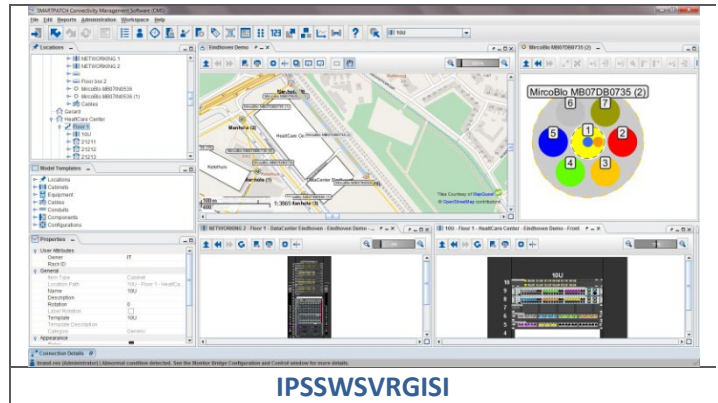


## APPLICATION

SmartPatch GIS Integration Bridge provides a seamless mechanism for integrating geographical maps into SmartPatch graphical location overviews. Geographical maps are automatically loaded into the overview and SmartPatch objects in these locations, such as buildings, manholes, conduits, and cables. These are accurately represented and managed in terms of their geographical coordinates. SmartPatch GIS Integration Bridge is suitable for managing campus, city, or inter-city outside plant physical assets and connectivity in SmartPatch.

## FEATURES

- Automatic positioning of buildings, manholes, conduits, and cables according to GPS coordinates
- Automatic geographical location of splicing equipment
- Conduit/cable length calculations
- Connection attenuation calculations
- Pinpoint distances on a map along with a connection (for example, to use with OTDR trace results)



## ORDER INFORMATION

Part Number	Item Description	Minimum SmartPatch Requirements
IPSSWSVRGIS	SmartPatch In-House Software GIS Integration bridge	IPSSWSVR30R SmartPatch In-House Software Solution 30 Racks
IPSSWSVRGIS-CA	SmartPatch SaaS Software GIS Integration bridge	IPSSWSVR30R-CA SmartPatch SaaS Software Solution 30 Racks

## MAP INTEGRATION

With simple configuration steps, geographical maps can be integrated into SmartPatch from any of the following map sources.

- Open Street Map Servers
- ESRI® ArcGIS® Servers
- Web Map Service (WMS) Servers
- Web Map Tile Service (WMTS) Servers

The map sources may reside on the internet or may be private servers with your organization, for example, to leverage your existing internal mapping services. In addition to retrieving maps dynamically from map servers, SmartPatch also supports the option of integrating static images, such as campus plans into SmartPatch geographically aware overviews.

## DATA INTEGRATION

---

Position and feature data relating to SmartPatch objects in geographical location overviews can be easily interchanged via CSV, KML and GeoJSON format, either manually via the SmartPatch GUI or automatically via the SmartPatch API.

---

*“Leviton is **dedicated** to **designing, developing, and manufacturing** sustainable **high-performance** structured cabling and speciality **cabling solutions**.”*

The information contained in this document is valid and correct at the time of issue. Leviton reserves the right to modify details without notice in light of subsequent standard/specification changes and ongoing technical developments.